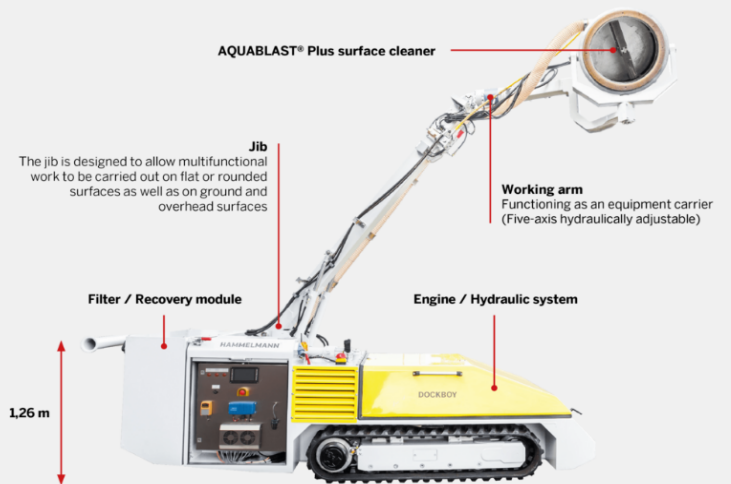


## Dock Boy



## DOCKBOY

For working on ship hull bottoms or similar surfaces



All models are CE marked





## Applications

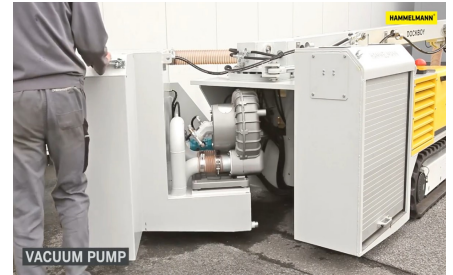
**For ship hull bottoms and all kinds of rounded surfaces**

Dockboy is a completely dust free, Eco friendly alternative to dry open abrasive blasting capable of preparing hull surfaces to the exacting standards applicable today. Using pressures varying between 2500 and 3000 bar up to 100sq meters per hour of surface can be prepared to NACE/SSPC Standards WJ1/SC-S.



UHP water blasting system with vacuum and waste water filter seals directly onto the hull surface and is connected to the vacuum unit via a hose/pipework combination.

The waste water containing removed solids is vacuumed into the filter/ recovery module where the separated solids are retained for disposal



## Countless different applications

For ship hull bottoms and all kind of round surfaces

Superstructures up to a height of 6,05m (can be optionally expanded to 13m) are possible Can be used on ship decks, car decks, cargo decks and other flat floor surfaces Extremely low vehicle height (only 1,23m) lower than most keel blacks



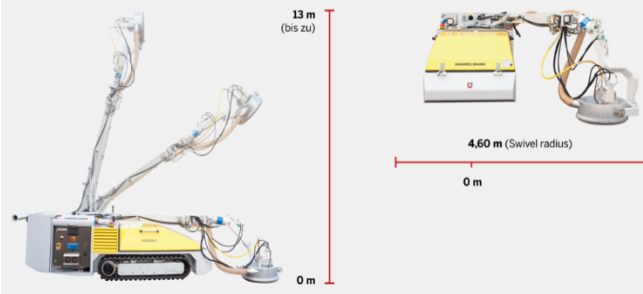
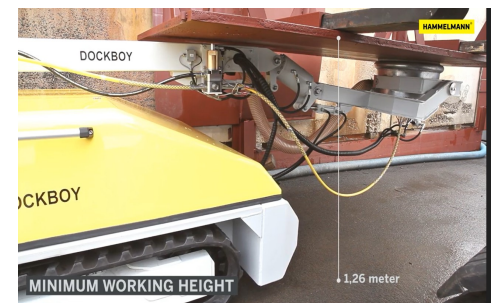
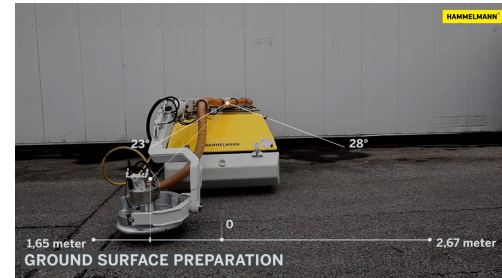
## Data sheet

Max. operating pressure:	3000 bar	
Recommended flow rate:	up to 47 l/min.	
Min. vehicle height:	1,26 m	
Vehicle width:	1,48 m	
Jib (Working height):	up to 6,05 m	up to 13 m
Vehicle length:	6,30 m	6,50 m
Weight:	~ 5,0 t	~ 5,2 t
Swivel radius:	4,60 m	5,00 m

## Recommended high-pressure units

(depending on the Aquablast® Plus surface cleaners)

HDP 200	28 l/min	3000 bar
HDP 200	40 l/min	2800 bar
HDP 300	47 l/min	3000 bar



## AQUABLAST

In combination with the direct, integrated Aquablast Plus vacuum system, the Dockboy ensures environmentally friendly de-rusting, plus the removal of old surface coatings and accumulated waste and wastewater

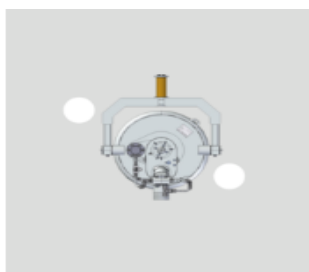


The specially developed nozzle layout ensures that the high-pressure water is distributed evenly across the entire working width.

Hydraulic drive for constant speeds, infinitely variable from 100 to 2500 rpm

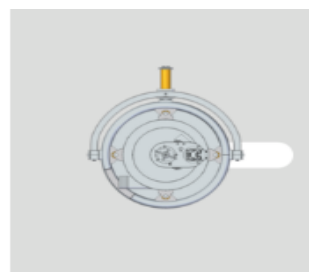
Oil and water kept completely separate – contamination of the hydraulic oil as a result of significant pressure losses not possible

Cleaning and vacuuming integrated in a single system



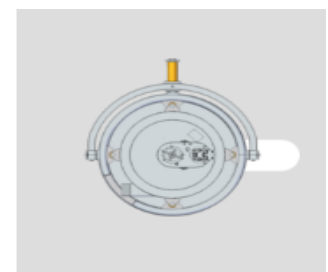
**Working width**  
274 mm (optional)

**Working parameters**  
28 - 47 l/min  
2800 - 3000 bar



**Working width**  
374 mm (optional)

**Working parameters**  
28 - 47 l/min  
2800 - 3000 bar



**Working width**  
520 mm (optional)

**Working parameters**  
47 l/min  
2800 - 3000 bar

Hydroblast based in  
Yorkshire England